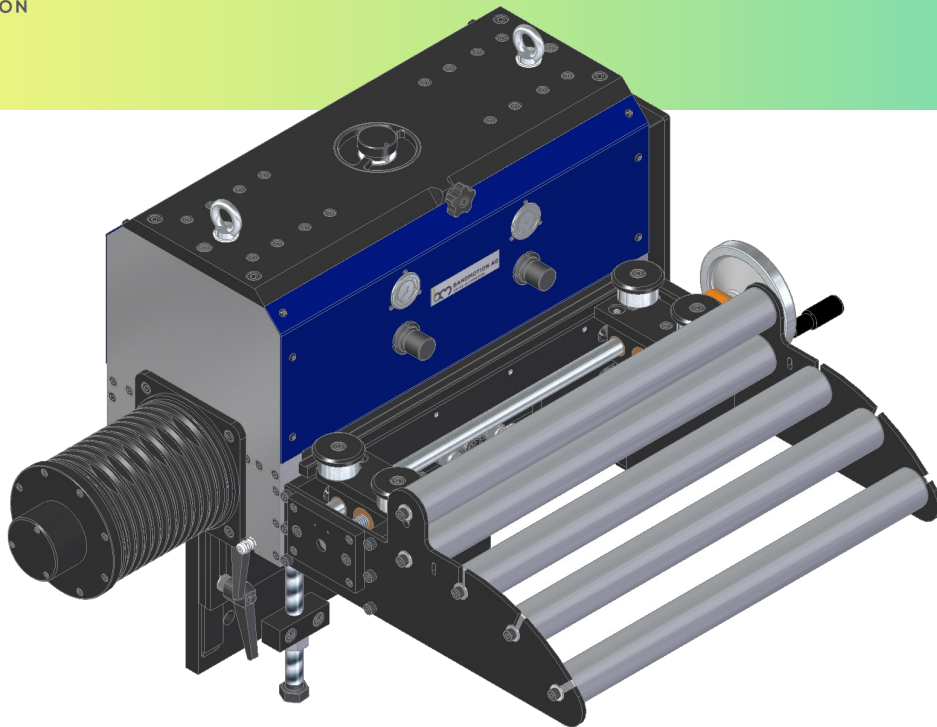




BANDMOTION AG
SWISS AUTOMATION

Roller feeder BMB 520-820 T



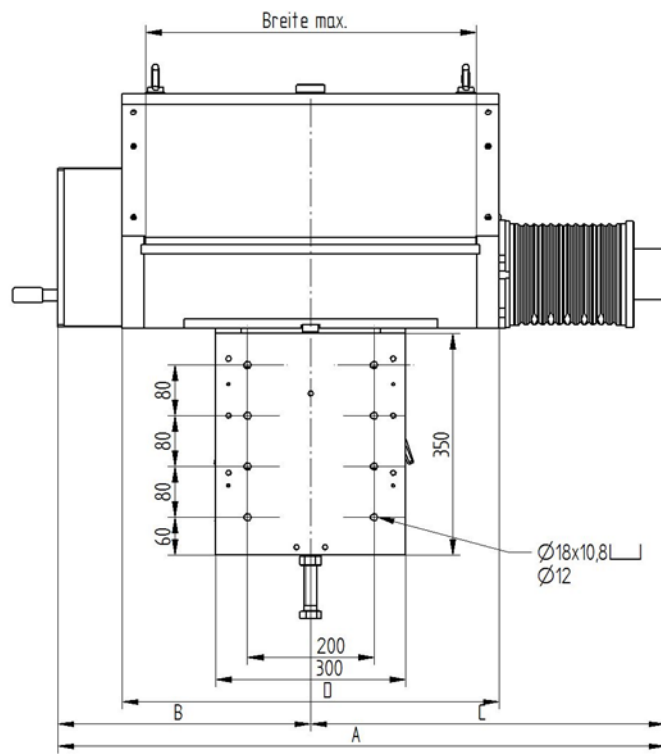
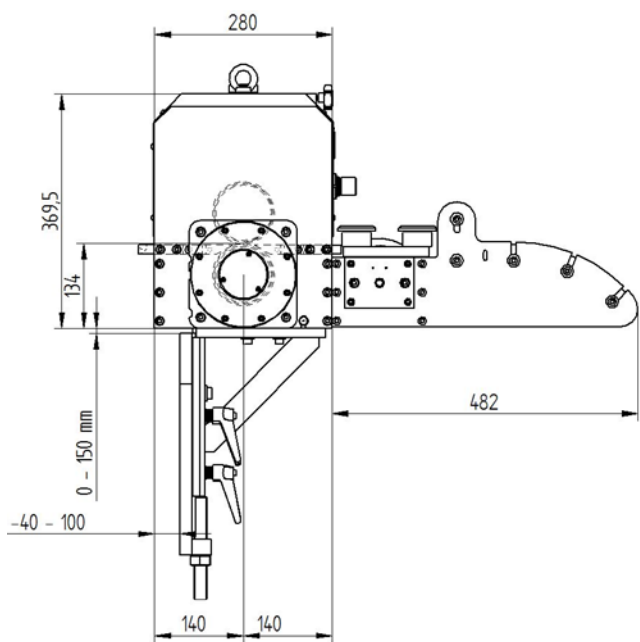
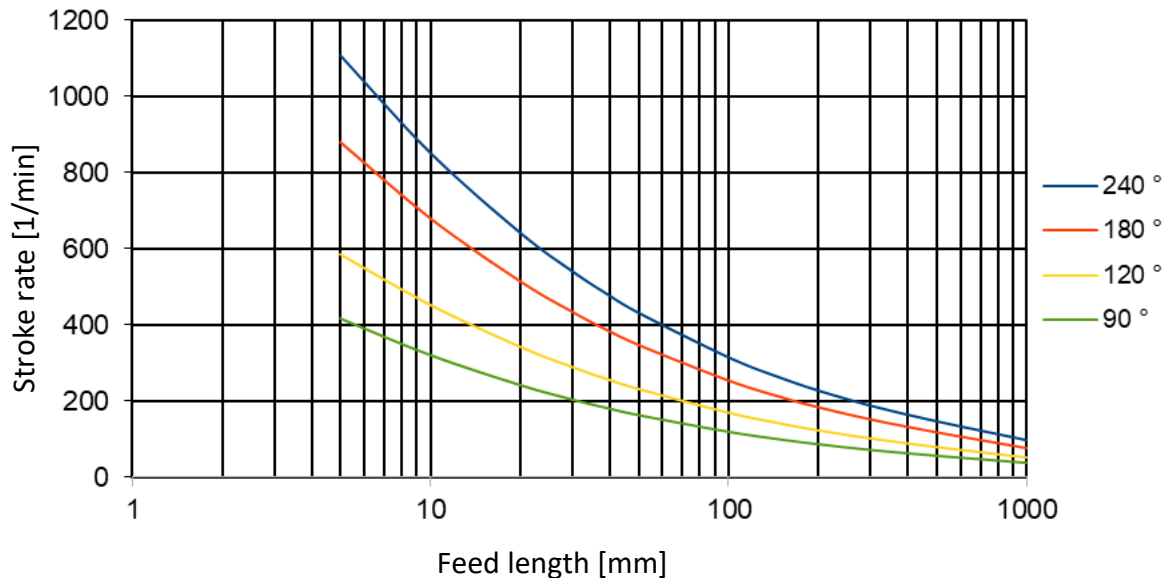
Highlights at one glance

- ⇒ Compact system can be used pushing or pulling
- ⇒ Easy attachment to any downstream machine
- ⇒ Lower and upper roller driven backlash-free, hardened and grinded
- ⇒ Fast pneumatic pilot releas
- ⇒ Roller lifting can be adjusted individually at the top and bottom
- ⇒ Adjustable roller pressure
- ⇒ Motor brake prevents belt retraction in emergency stop situations
- ⇒ Infeed roller basket with integrated belt end sensor
- ⇒ Highly dynamic CNC drive with torque motor
- ⇒ CNC control as standard as built-in cassette or optionally as table-top housing
- ⇒ Linking the downstream machine to a 24V I/O unit with 18 inputs and 11 outputs
- ⇒ Integrated safety with pulse lock or safety monitoring unit up to PLe/SIL3
- ⇒ Stroke rate-dependent programming, multiple feeds, threading function
- Options:
 - ⇒ Optional RS232 interface for feed data transmission with ASCII protocol
 - ⇒ Optional various fieldbus connections
 - ⇒ Optional service software for device analysis, PLC programming and data backup
 - ⇒ Optional synchronous mode with downstream machine
 - ⇒ Further options such as measuring wheel, mark reader, cam controller, etc.
 - ⇒ Special designs according to your specifications are possible at any time on request

Technical data

Strip width	max. 520-820mm
Roller \varnothing	98mm
Roller opening	max. 5mm
Precision	+/- 0.03mm
Continuous tensile force	557 N
Speed max.	215m/min
Power supply	3x400V / 50Hz

Stroke rate diagram without pilot release with belt weight 5kg



Typ	Breite max.	A	B	C	D
BMB 520 T	520	959	399	560	595
BMB 620 T	620	1059	449	610	695
BMB 820 T	820	1259	549	710	895