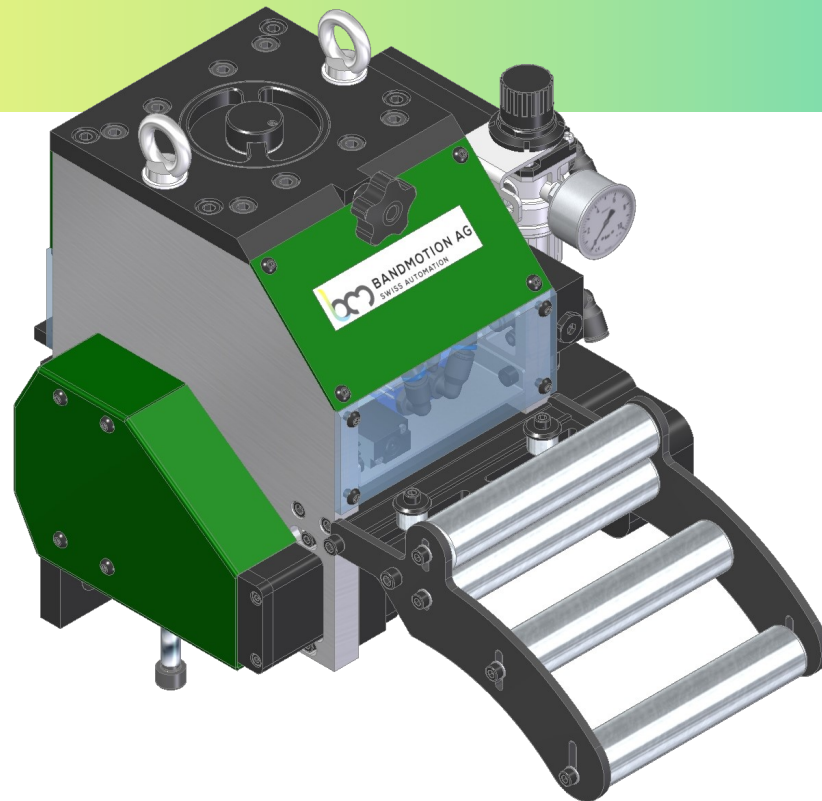




BANDMOTION AG
SWISS AUTOMATION

Roller feeder BMK 080-220 S



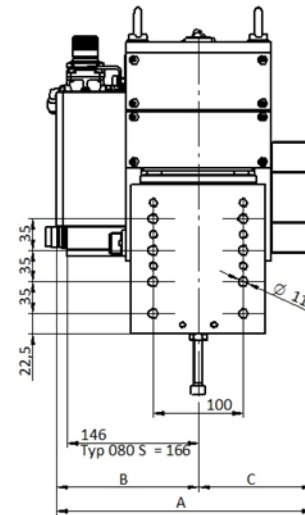
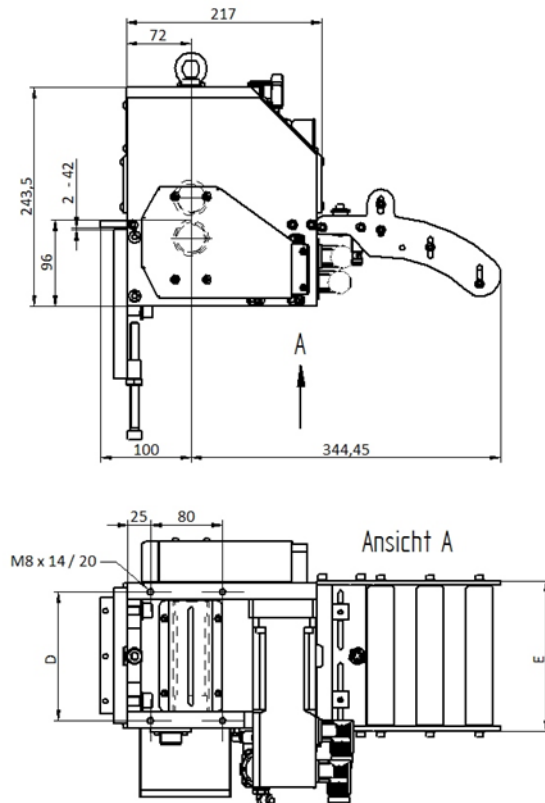
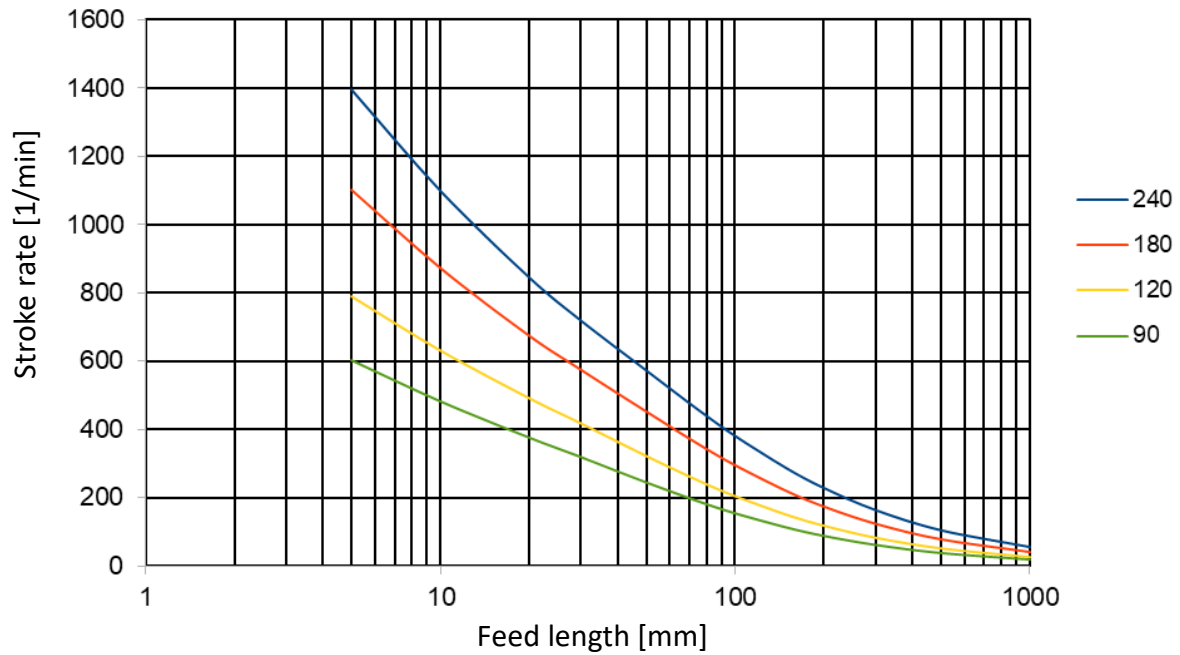
Highlights at one glance

- ⇒ Compact system can be used pushing or pulling
- ⇒ Easy attachment to any downstream machine
- ⇒ Lower and upper roller driven backlash-free, hardened and grinded
- ⇒ Fast pneumatic pilot release
- ⇒ Roller opening at the top and bottom can be adjusted individually
- ⇒ Adjustable roller pressure
- ⇒ Infeed roller basket with integrated strip end sensor
- ⇒ Highly dynamic CNC drive with servo motor
- ⇒ CNC control as standard as built-in cassette or optionally as table-top housing
- ⇒ Linking the slave machine to a 24V I/O unit with 18 inputs and 11 outputs
- ⇒ Integrated safety with pulse lock or monitoring unit up to PLe/SIL3
- ⇒ Stroke rate-dependent programming, multiple feeds, threading function
- Options:
 - ⇒ Optional RS232 interface for feed data transmission with ASCII protocol
 - ⇒ Optional various fieldbus connections
 - ⇒ Optional service software for device analysis, PLC programming and data backup
 - ⇒ Optional synchronous mode with downstream machine
 - ⇒ Optional measuring wheel, mark reader, cam gear, etc.
 - ⇒ Special designs according to your specifications are possible at any time on request

Technical data

Strip width	080-220mm
Roller \varnothing	40mm
Roller opening	max. 5mm
Precision	+/- 0.03mm
Continuous tensile force	550 N
Speed max.	85m/min
Power supply	230Vac

Stroke rate diagram without pilot release with belt weight 1



Typ	Breite max.	A	B	C	D	E
BMK 080 S	80	244	137	107	103	127
BMK 120 S	120	284	157	127	143	167
BMK 220 S	220	384	207	177	243	267