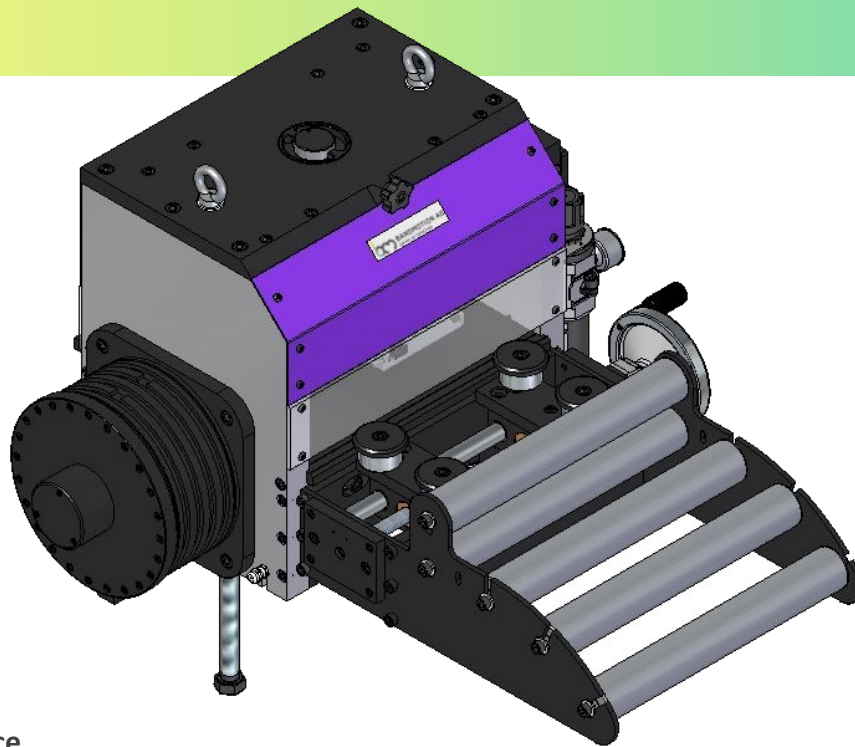




**BANDMOTION AG**  
SWISS AUTOMATION

# Roller feeder BMG 250-450 T



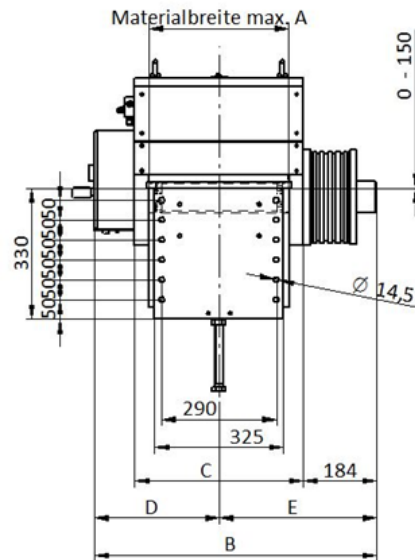
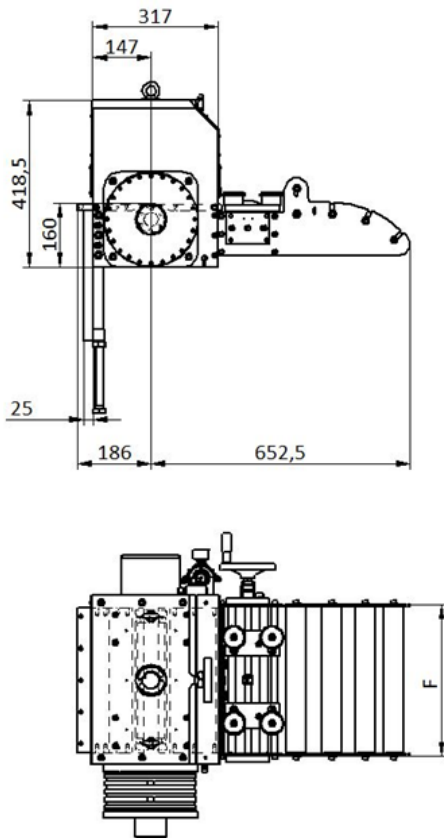
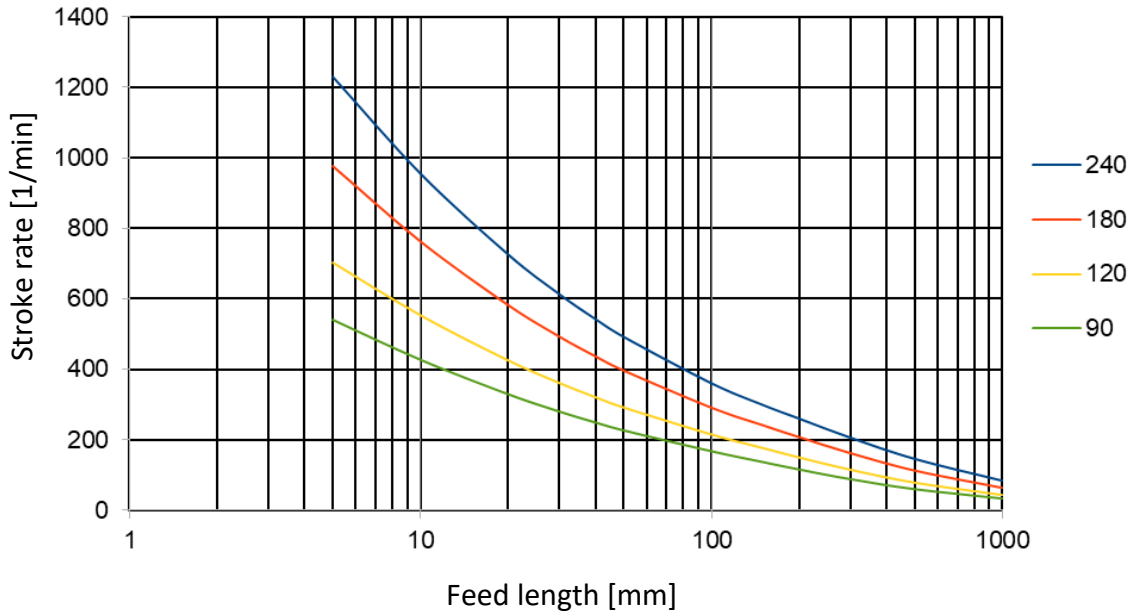
## Highlights at one glance

- ⇒ Compact system can be used pushing or pulling
- ⇒ Easy attachment to any downstream machine
- ⇒ Lower and upper roller driven backlash-free hardened and grinded
- ⇒ Fast pneumatic pilot releas
- ⇒ Roller opening individually adjustable at top and bottom
- ⇒ Adjustable roller pressure
- ⇒ Motor brake prevents strip retraction in emergency stop situations
- ⇒ Infeed roller basket with integrated strip end sensor
- ⇒ Highly dynamic CNC drive with torque motor
- ⇒ CNC control as standard as built-in cassette or optionally as table-top housing
- ⇒ Linking the downstream machine to a 24V I/O unit with 18 inputs and 11 outputs
- ⇒ Integrated safety with pulse inhibitor or monitoring unit up to PLe/SIL3
- ⇒ Stroke rate-dependent programming, multiple feeds, threading function
- Options:
  - ⇒ Optional RS232 interface for feed data transmission with ASCII protocol
  - ⇒ Optional various fieldbus connections
  - ⇒ Optional service software for device analysis, PLC programming and data backup
  - ⇒ Optional synchronous mode with downstream machine
  - ⇒ Further options such as measuring wheel, mark reader, cam gear etc.
  - ⇒ Special designs according to your specifications are possible at any time on request.

## Technical data

Strip width	250-450mm
Roller $\varnothing$	80mm
Roller opening	max. 9mm
Precision	+/- 0.02mm
Continuous tensile force	1300 N
Speed max.	150m/min
Power supply	3x400V / 50Hz

Stroke rate diagram without pilot release with belt weight 10kg



Typ	Breite max. A	B	C	D	E	F
BMG 250 T	252	611.5	325	265	346.5	282
BMG 350 T	352	711.5	425	315	396.5	382
BMG 450 T	452	811.5	525	365	446.5	482