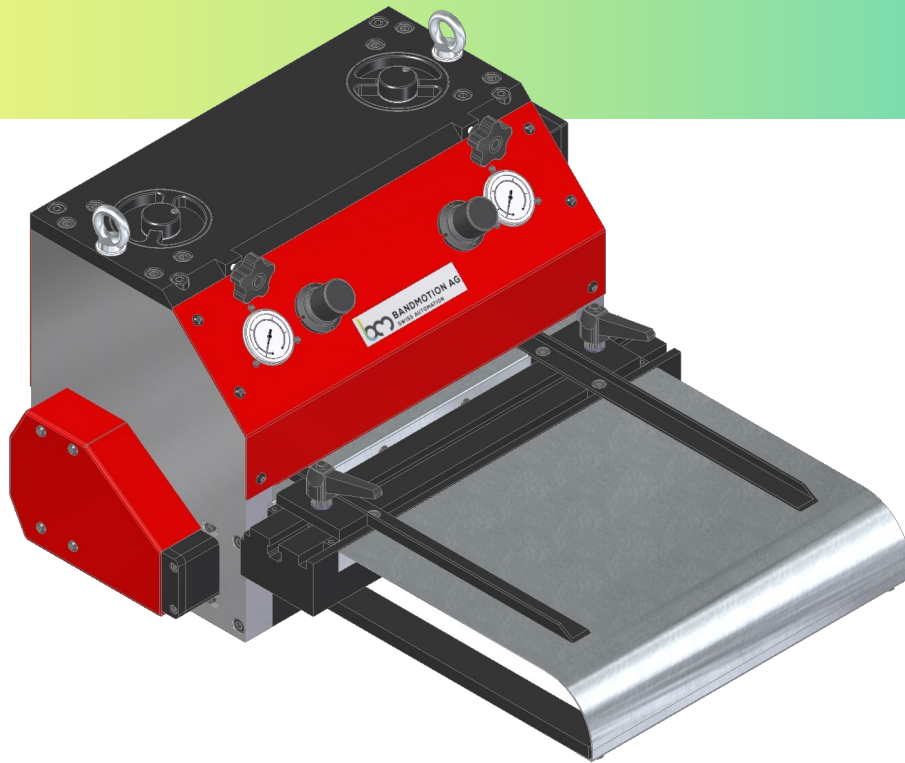




BANDMOTION AG
SWISS AUTOMATION

Roller feeder BMF 220-520 S



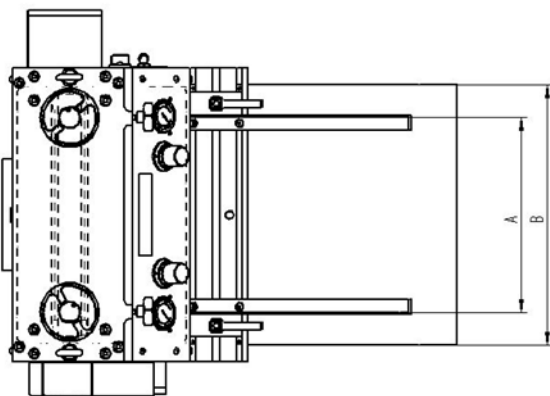
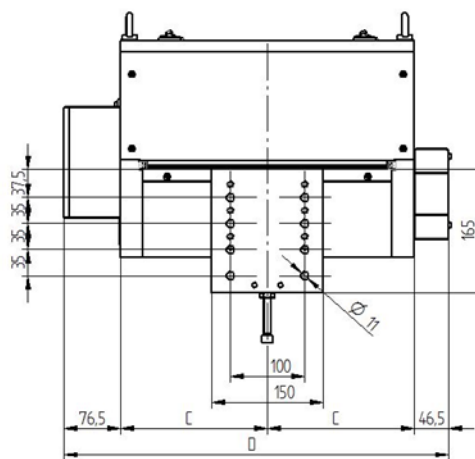
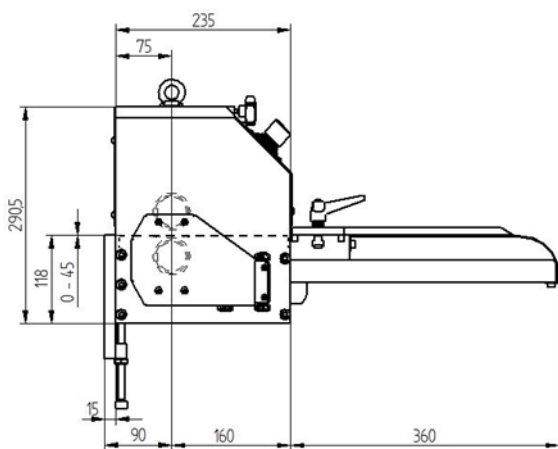
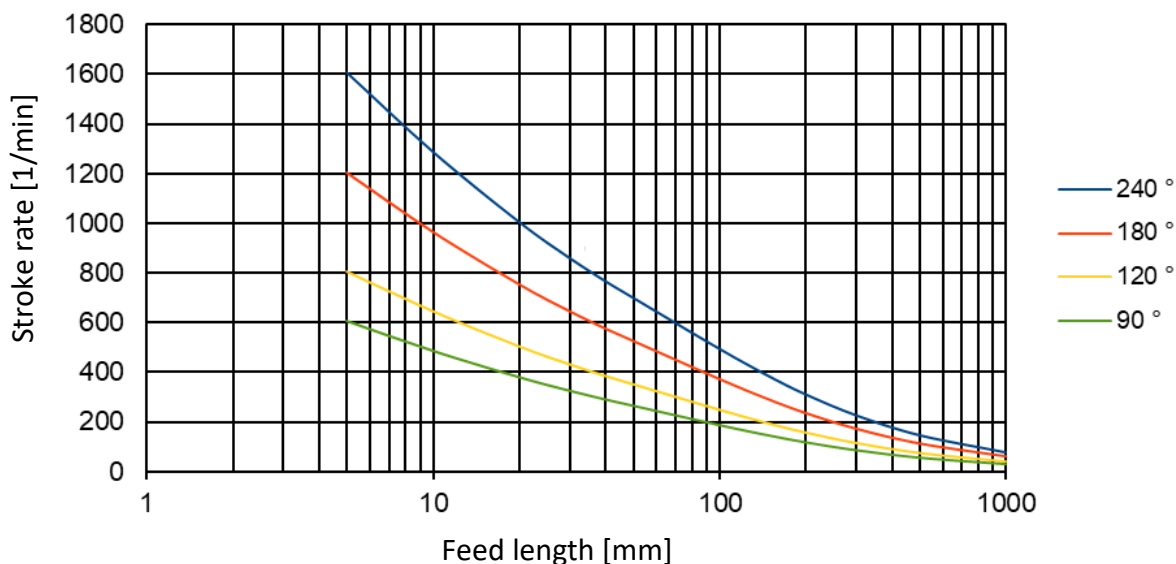
Highlights at one glance

- ⇒ Compact system can be used pushing or pulling
- ⇒ Easy attachment to any downstream machine
- ⇒ Lower and upper roller driven without play, PU coating with 90 Shore
- ⇒ Fast pneumatic pilot release
- ⇒ Roller lifting can be adjusted individually at the top and bottom
- ⇒ Adjustable roller pressure
- ⇒ Inlet metal sheet with strip guides
- ⇒ Highly dynamic CNC drive with servo motor
- ⇒ CNC control as standard with built-in cassette or optionally as table-top housing
- ⇒ Linking the downstream machine to a 24V I/O unit with 18 inputs and 11 outputs
- ⇒ Integrated safety with pulse lock or monitoring unit IS1 up to PLe/SIL3
- ⇒ Stroke rate dependent programming, multiple feeds, threading function
- Options:
 - ⇒ Optional RS232 interface for feed data transmission with ASCII protocol
 - ⇒ Optional various fieldbus connections
 - ⇒ Optional service software for device analysis, PLC programming and data backup
 - ⇒ Optional synchronous mode with slave machine
 - ⇒ Further options such as measuring wheel, mark reader, cam controller, etc.
 - ⇒ Special designs according to your specifications are possible at any time on request

Technical data

Strip width	max. 220-520mm
Roller \varnothing	60mm
Roller opening	max. 5mm
Precision	+/- 0.05mm
Continuous tensile force	370 N
Speed max.	125m/min
Power supply	230Vac

Stroke rate diagram without pilot release with belt weight 1kg



Typ	A	B	C	D
BMF 220 S	220	250	147.5	418
BMF 320 S	320	350	197.5	518
BMF 420 S	420	450	247.5	618
BMF 520 S	520	550	297.5	718